

Founder
1 Bit TIFF to PDF

Quick Start

January 2011

Beijing Founder Electronics Co., Ltd.

FOUNDER

The software described in this manual is furnished under a license agreement and may be used only in accordance with the terms of the agreement.

Copyright Notice

Copyright © 2009-2011 Beijing Founder Electronics Co., Ltd. All Rights Reserved.

Any technical documentation that is made available by the Beijing Founder Electronics Co., Ltd. is the copyrighted work of the Beijing Founder Electronics Co., Ltd. and is owned by the Beijing Founder Electronics Co., Ltd.

NO WARRANTY. The technical documentation is being delivered to you AS-IS and the Beijing Founder Electronics Co., Ltd. makes no warranty as to its accuracy or use. Any use of the technical documentation or the information contained therein is at the risk of the user. Documentation may include technical or other inaccuracies or typographical errors. Founder reserves the right to make changes without prior notice. No part of this publication may be copied without the express written permission of the Beijing Founder Electronics Co., Ltd., No.9, The Fifth Street, Shangdi Information Industry Base, Haidian District, Beijing 100085, People's Republic of China.

Trademarks

Founder and Founder logo are registered trademarks of Founder Group Corporation.

Microsoft, Windows, Windows Server 2003 and Windows XP are trademarks or registered trademarks of Microsoft Corporation.

Adobe and Adobe Acrobat are registered trademarks of Adobe Systems Incorporated.

Pentium is a registered trademark of Intel Corporation.

Other products, fonts and company names and logos in this Manual are trademarks or registered trademarks of their respective holders and are hereby acknowledged.

Printed in the People's Republic of China

Contents

<i>Install the tool</i>	1
<i>About the tiff files</i>	6
<i>Start the tool</i>	7
<i>Submit tiff files</i>	9
<i>Use the Open command</i>	9
<i>Use a hot folder</i>	9
<i>Output PDF file</i>	11
<i>Before the output</i>	11
<i>Output setting</i>	12
<i>Output</i>	13
<i>After the output</i>	14
<i>System Preferences</i>	15
<i>Notes</i>	17

Using the 1 Bit Tiff to PDF tool, you can convert multiple 1 bit tiff files representing the various separations of a same page file, into a single PDF file.

Install the tool

The 1 Bit Tiff to PDF tool is developed for use together with Founder's ElecRoc or EagleRIP system. But as a standalone program, you need to perform a separate and manual installation, on the computer where you have installed EagleRIP, or a computer in the LAN where you have deployed ElecRoc system.

Recommended configuration: Pentium 4, 1 GB of RAM, 20 GB free disk space, 15" color monitor, CD-ROM drive, network connectivity.

Operating system: Windows XP, Windows Server 2003

Follow the steps below to install (on Windows XP as example).

1. Double-click the file **setup.exe** to run the install program. The install program starts collecting system related information, and after this, it displays the welcome window.

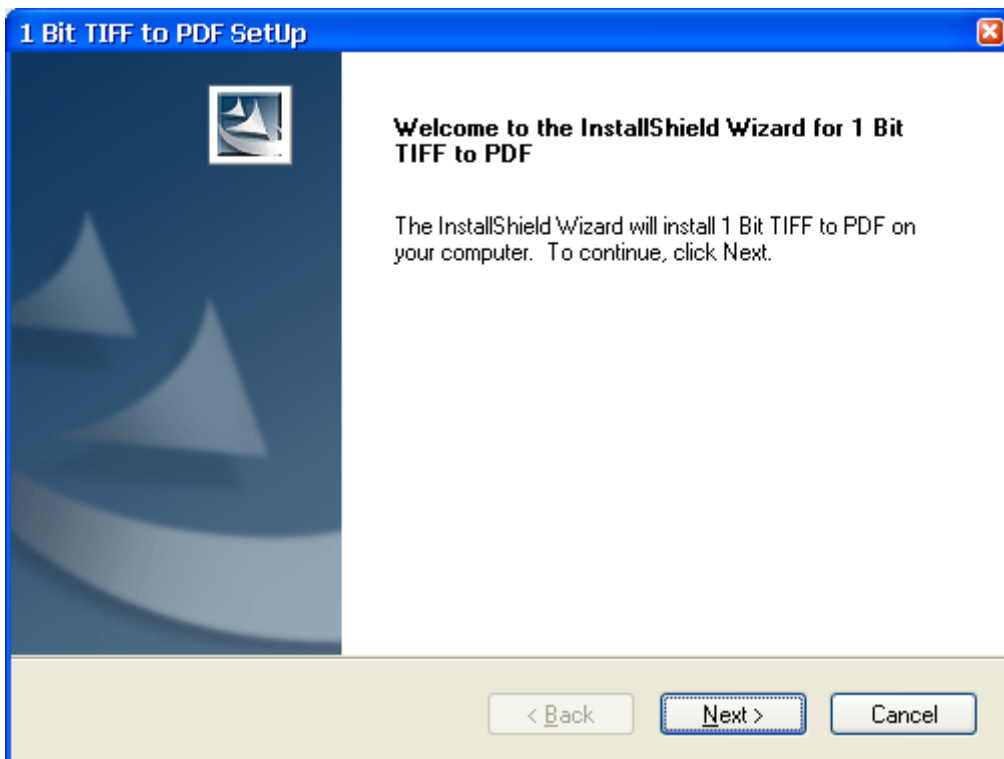


Figure-1

2. Click **Next**. The install program shows the license agreement. Accept the terms and click **Next** to continue.

1 Bit TIFF to PDF

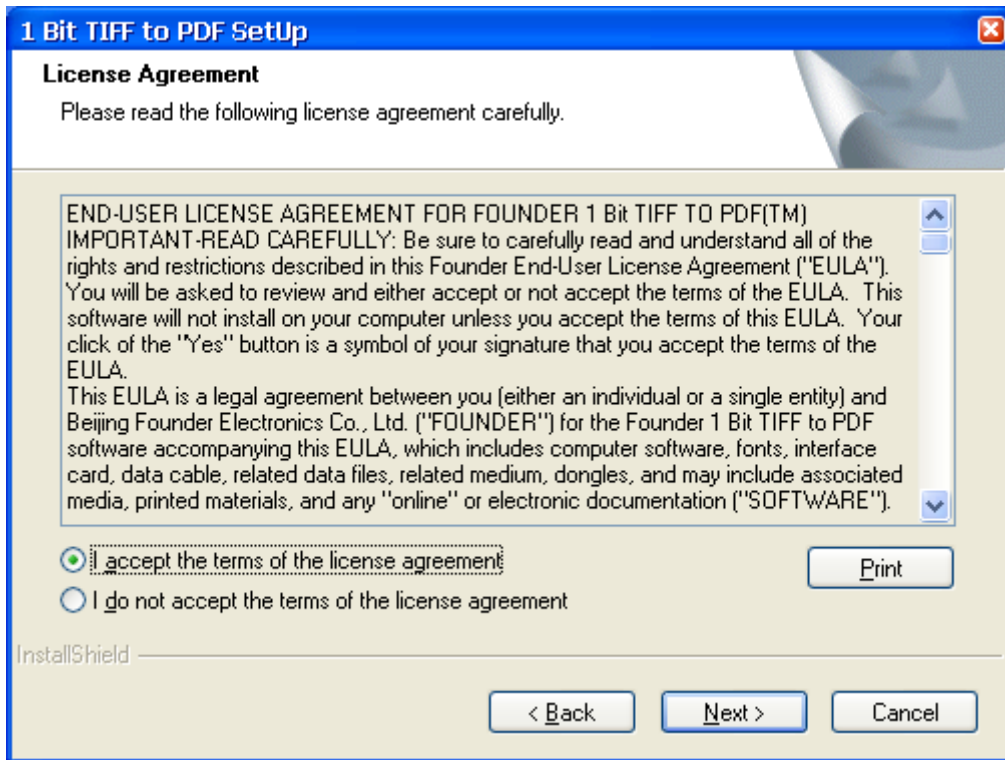


Figure-2

3. Input the user name and company name, and click **Next**.

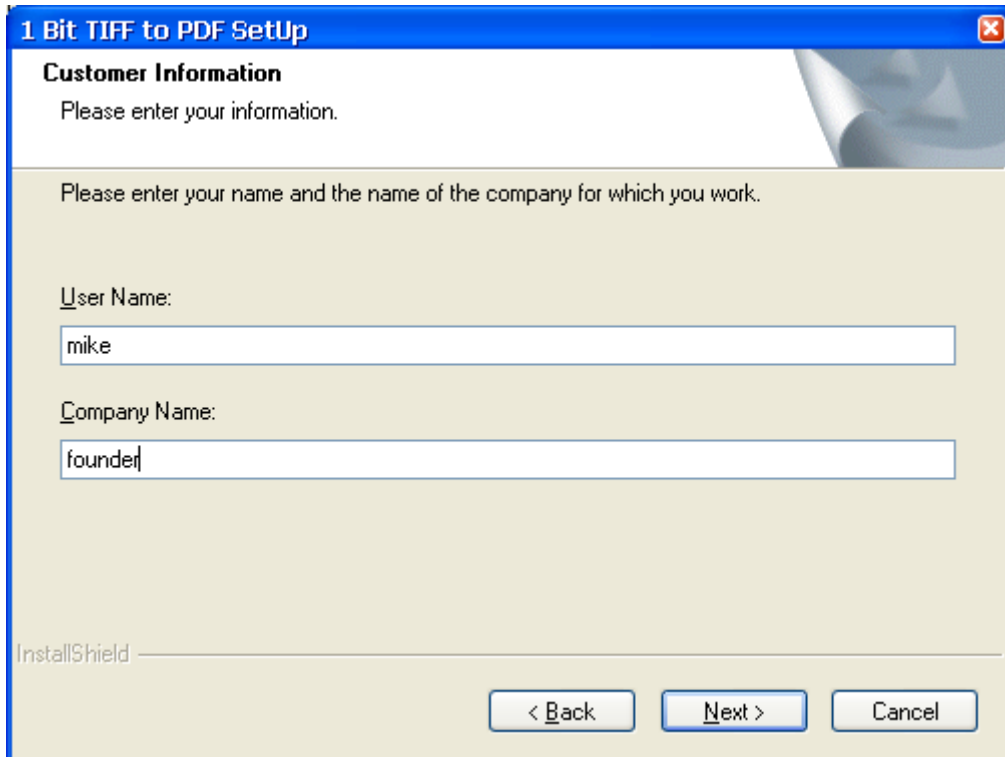


Figure-3

4. The install program prompts you to specify a destination. You can use the default folder, or specify another with the **Change** button. And then, click **Next**.

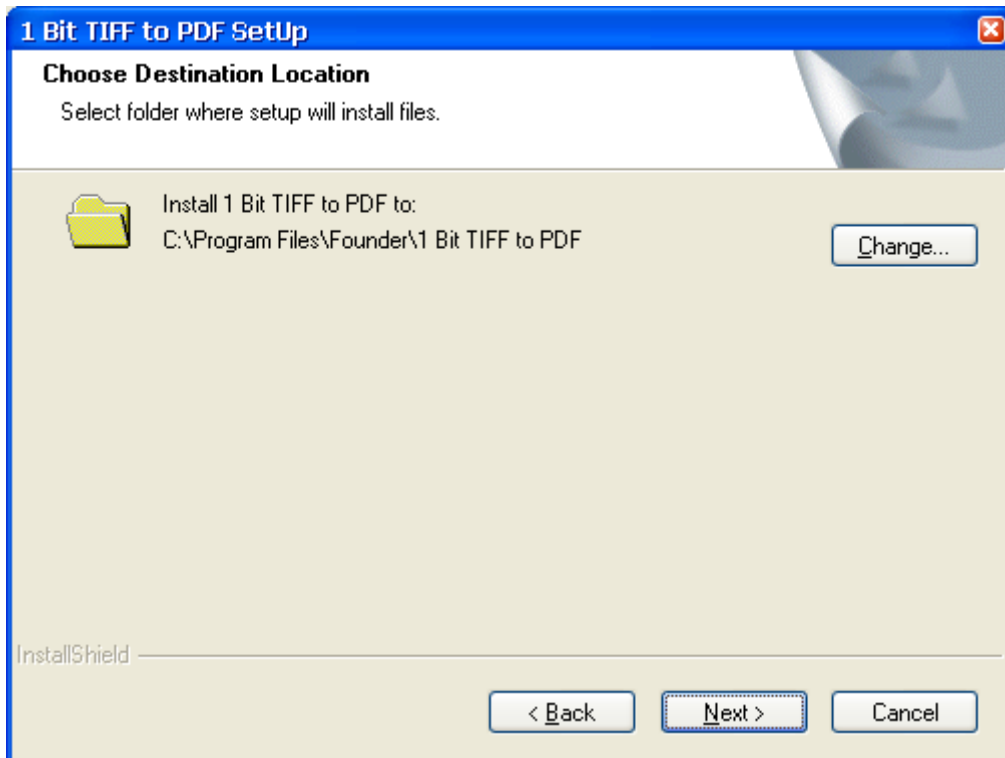


Figure-4

5. The 1 bit Tiff to PDF tool can be used together with Founder's ElecRoc or EagleRIP system. Here you need to choose the server your tool is intended to connect.

1 Bit TIFF to PDF

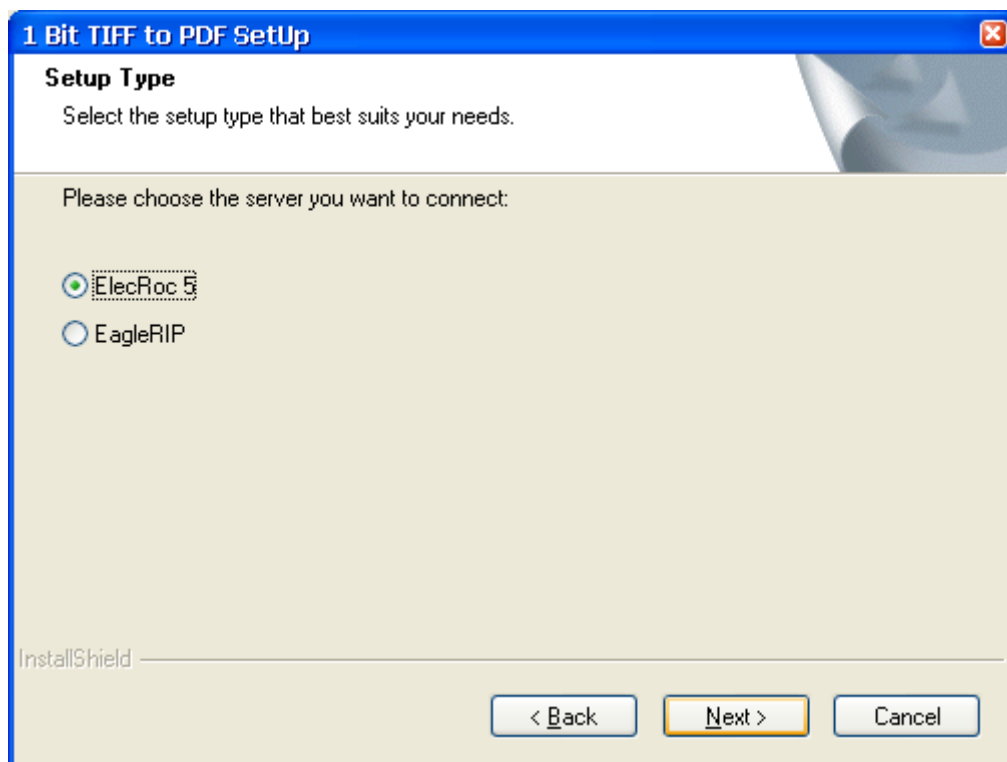


Figure-5

6. Specify the program folder.

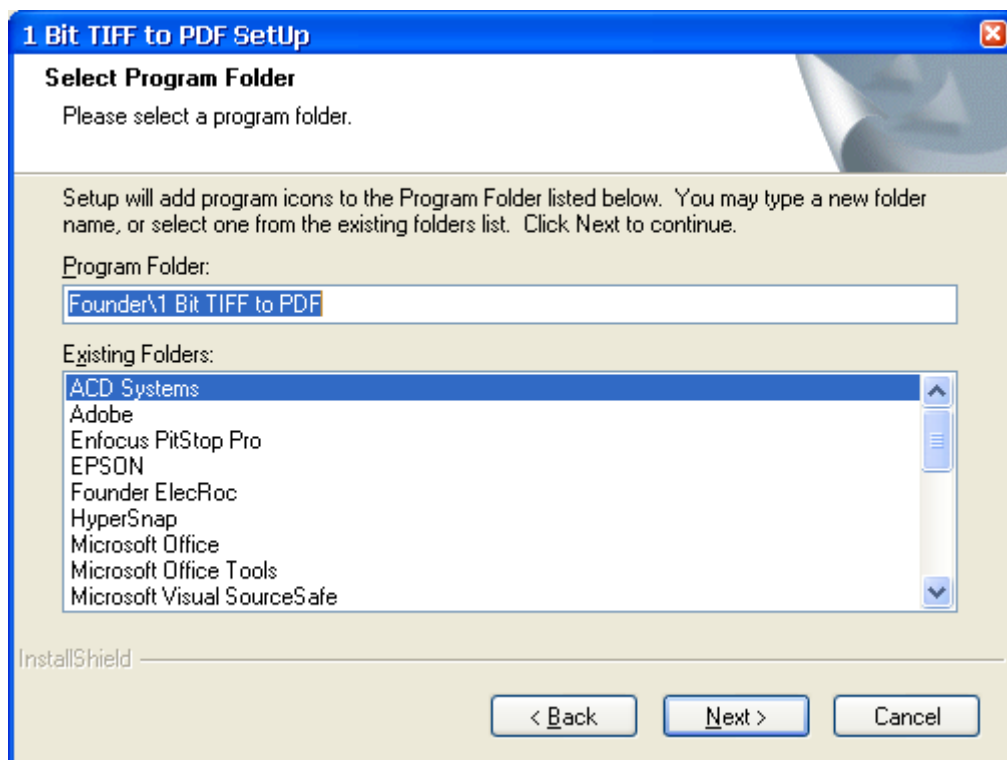


Figure-6

7. The program prompts that it's ready to begin the installation. Click **Install**.

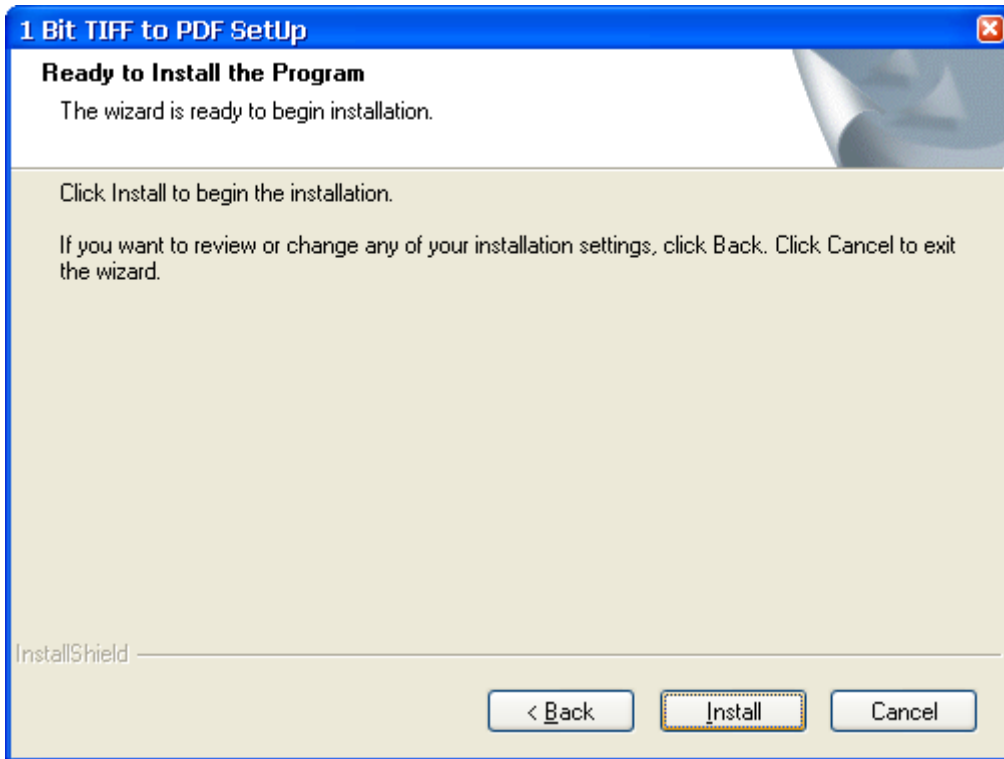


Figure-7

8. It starts the installation. The bar shows the progress.

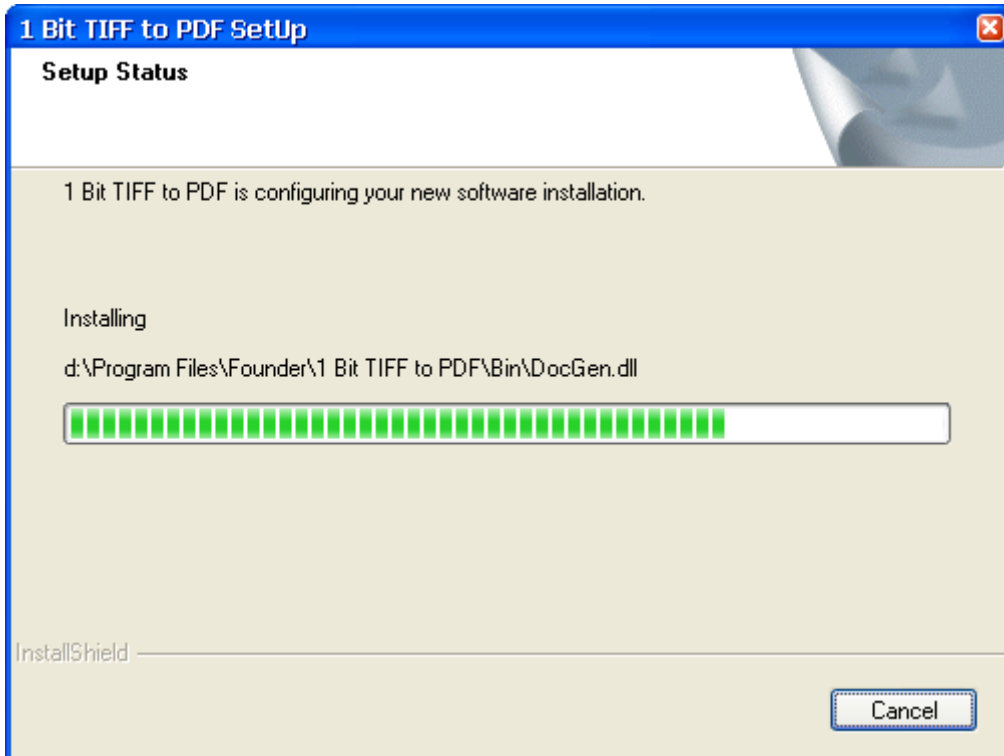


Figure-8

1 Bit TIFF to PDF

9. When the bar reaches 100%, it prompts that the installation is completed. Click **Finish** to exit.

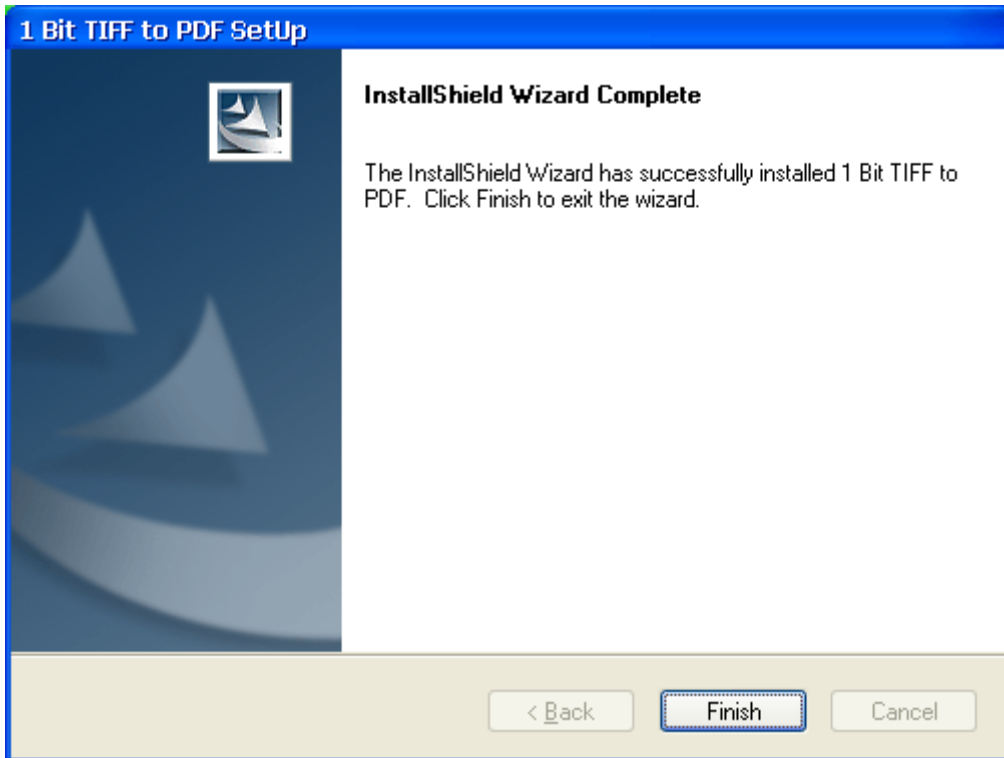


Figure-9

About the tiff files

This tool accepts the 1 bit tiff files from Founder's ElecRoc and EagleRIP, or the third party HQ's RIP. The 1 bit tiff files are produced in these applications as follows:

In Founder EagleRIP or HQ RIP, install the TIFF device driver and then use the TIFF or TIFF-based template to submit, RIP and print out a file, and you can find out its 1 bit tiff files generated under a directory that can be specified in the template.

1. Choose the **TIFF** device driver option to install EagleRIP;
2. Configure the TIFF template, or create a TIFF-based template;
3. Specify the output directory for the tiff files in the template;
4. Use the TIFF template to submit the files;
5. RIP and print out.

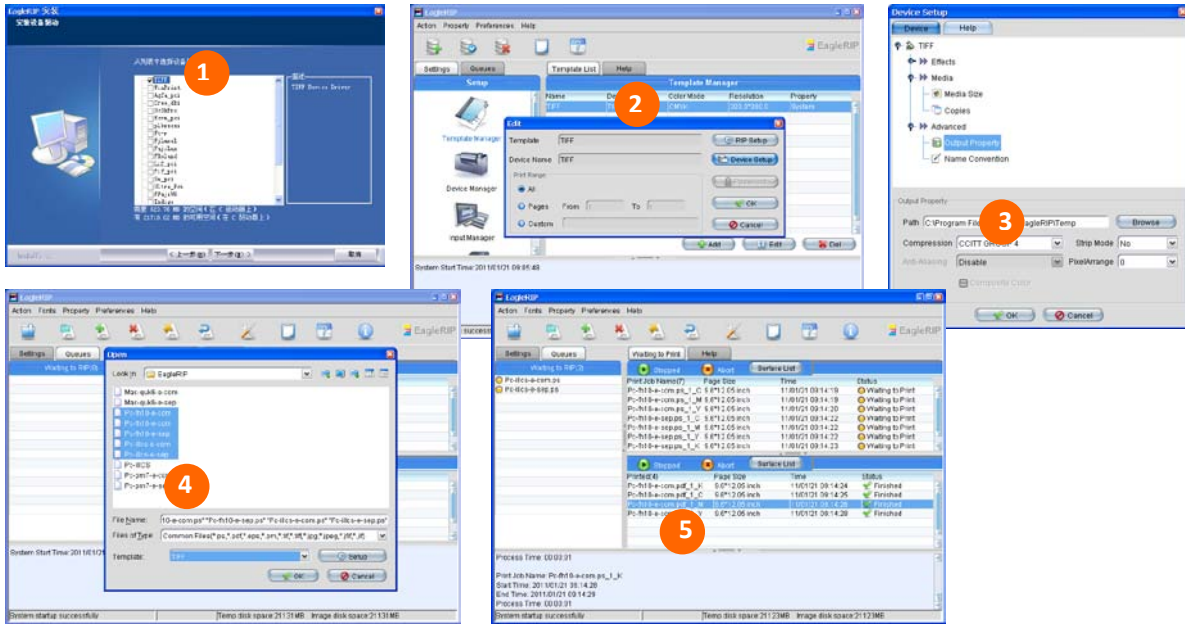


Figure-10

In Founder ElecRoc, you can use the 1 Bit TIFF Export processor to generate 1 bit tiff files under a specified directory. The output directory can be defined in the processor's parameter setup window.

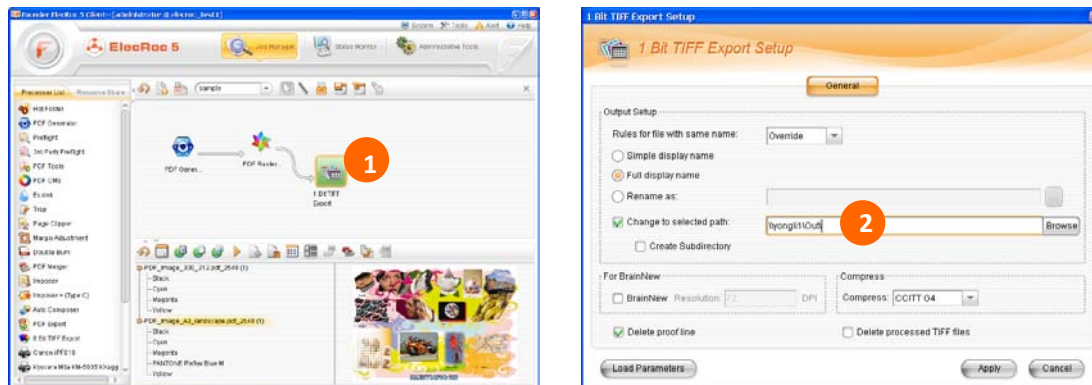


Figure-11

1. An ElecRoc workflow containing the processor 1 Bit Tiff Export;
2. The 1 Bit Tiff Export processor parameter setup window.

Start the tool



Double-click the shortcut icon of the tool on the desktop, or choose **Start > All Programs > Founder > 1 Bit TIFF to PDF > 1 Bit TIFF to PDF**, to start the tool.

- 1) For use in ElecRoc environment: if your tool is prepared for use along with Founder ElecRoc, you will need to provide the name or the IP of the computer where the ElecRoc dongle is installed.

1 Bit TIFF to PDF

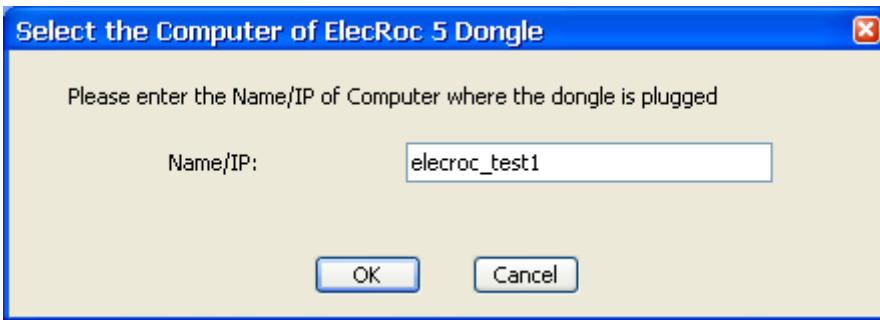


Figure-12

2) For use in EagleRIP environment: if your tool is ready for use with Founder EagleRIP, you need to provide the EagleRIP option number.

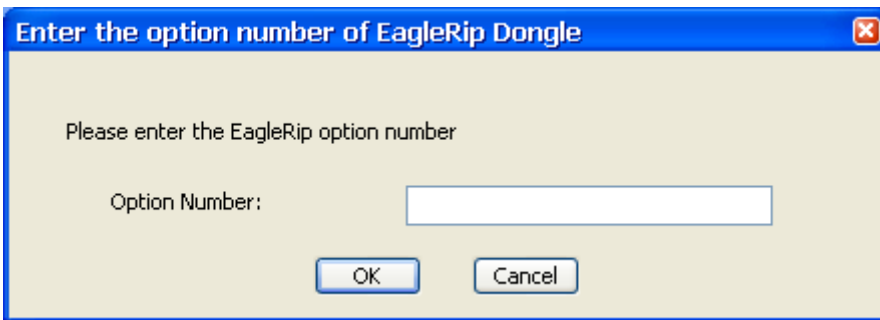


Figure-13

Click **OK**. The main window of the tool appears.

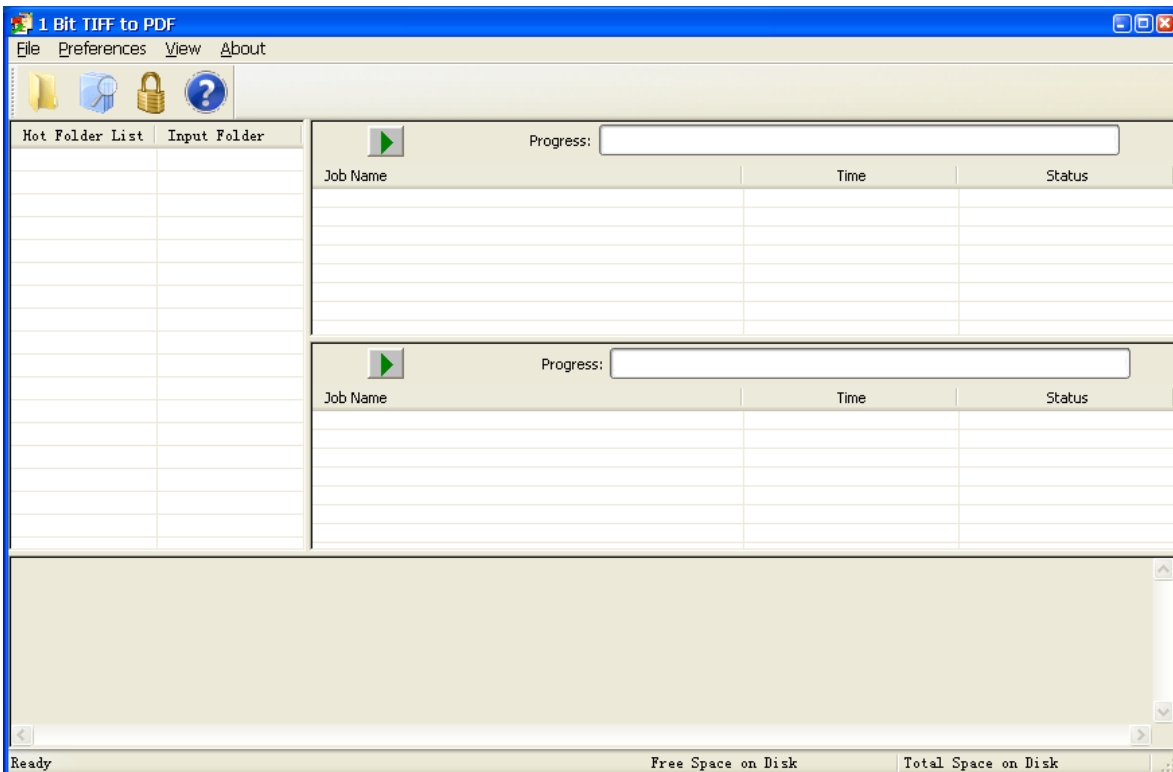



Figure-14

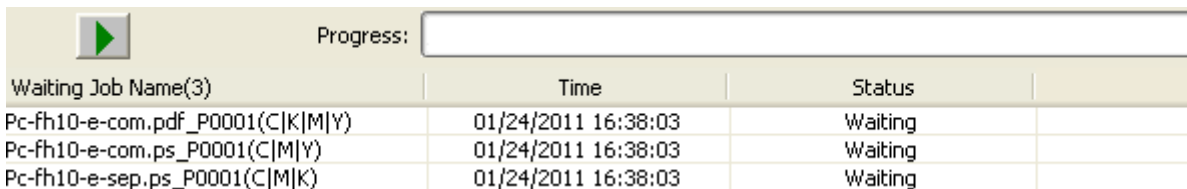
Submit tiff files

There are two ways for you to submit the tiff files to this tool.

Use the Open command

Click the toolbar icon , or choose from the menu **File > Open....** In the follow-up dialog box, locate the tiff files and open them.

The opened files are then shown in the upper-right queue of the main window, i.e. the **Waiting...** queue.



The screenshot shows a progress bar at the top with a play button icon and the label "Progress:". Below it is a table with three columns: "Waiting Job Name(3)", "Time", and "Status".

Waiting Job Name(3)	Time	Status
Pc-fh10-e-com.pdf_P0001(C K M Y)	01/24/2011 16:38:03	Waiting
Pc-fh10-e-com.ps_P0001(C M Y)	01/24/2011 16:38:03	Waiting
Pc-fh10-e-sep.ps_P0001(C M K)	01/24/2011 16:38:03	Waiting

Figure-15

Use a hot folder

Define a hot folder and put the tiff files into the folder. The tool can automatically detect and process the tiff files entered into the hot folder.

To define a hot folder, perform as follows:


1. Click the toolbar icon , or choose from the menu **File > Add Hot Folder.**



Figure-16

Input the name for your hot folder setting, and click **OK**.

2. The setup window for your hot folder appears. Configure the parameters as needed, and then click **OK**.

1 Bit TIFF to PDF

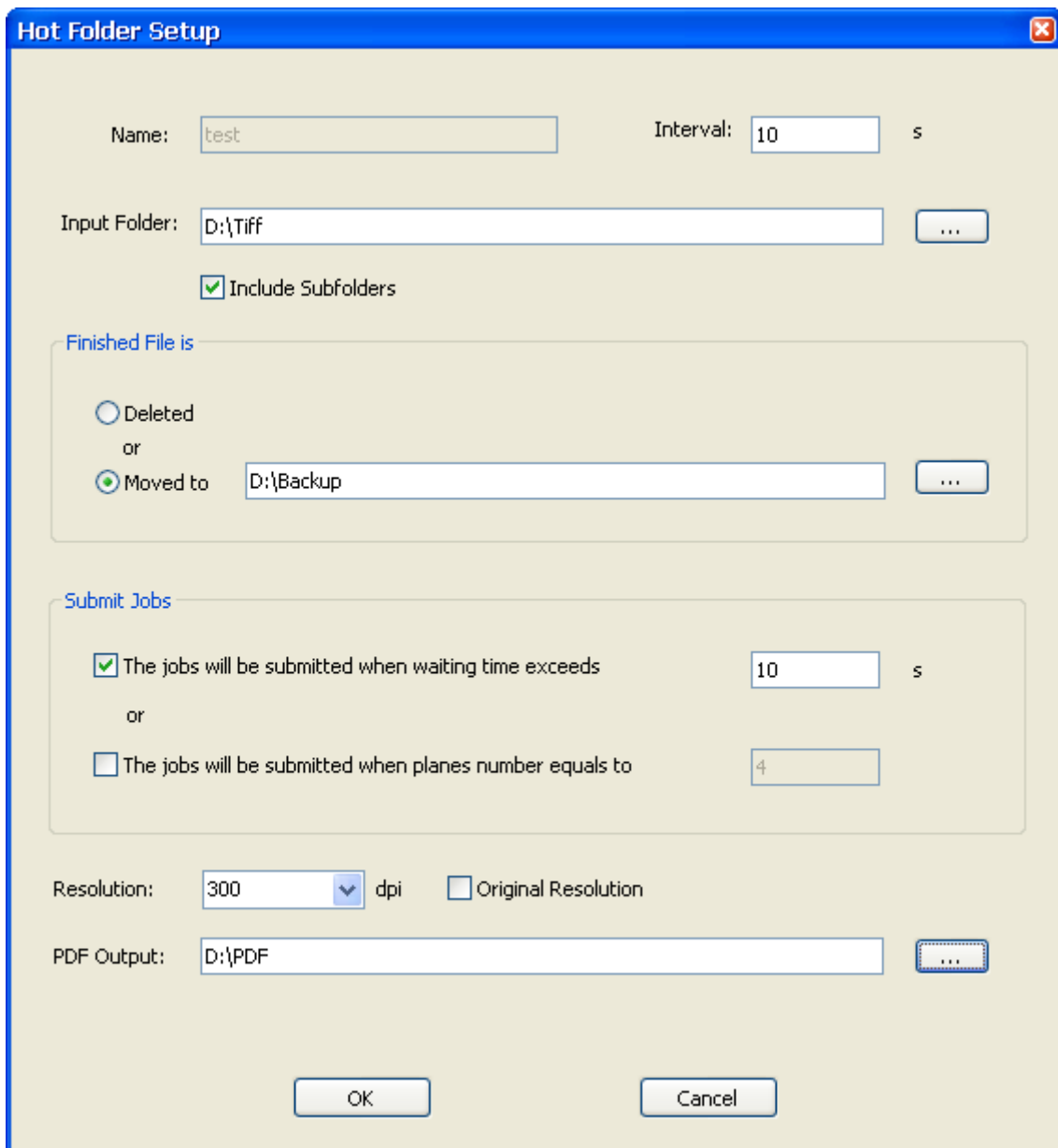


Figure-17

You need to specify the input and output folders.

Input Folder: The folder where the tool receives the tiff files. After you put the tiff files into this folder, the tool can then automatically and regularly detect them, and process them upon the detection. If you check **Include Subfolders**, the tool can search for the tiff files in the subfolders (if any). In practice, for example, you can specify the output directory of EagleRIP or of ElecRoc's 1 Bit Tiff Export processor as the input folder.

PDF Output: The folder where the tool generates, i.e. outputs the PDF files.

Resolution: The resolution of the final generated PDF files. If you want the resolution to be same as that of the input tiff files, check **Original Resolution**. If not, you can choose a resolution from the dropdown list or enter a custom one, ranging from 72 to 1440 dpi.

Submit Jobs: The multiple tiff files screened from a same file may not arrive to the input folder simultaneously. In this case, you can check **The jobs will be submitted when waiting time exceeds**, and specify a time value, when no tiff files arrives within the specified time period (10 seconds), the tool will stop waiting and submit the files, even if some of the tiff files may have not arrived. Or you can check **The jobs will be submitted when planes number equals to**, and specify a number value, when the number of the arrived tiff files equals to the specified number, the tool will also stop waiting and submit the files, even if some files may not have arrived.

You may specify other relevant parameters, if needed.

Interval: The time interval at which the tool regularly detects in the folder.

Finished File is Deleted or Moved to: If you check **Deleted**, the tiff files in the input folder will be deleted after the generation of the PDF file. If you check **Moved to**, you can specify a destination and the tiff files will then be moved to this destination.

Click **OK** when you have defined the above parameters.

3. You will then see the hot folder setting in the left queue of the main window. Check it to run the hot folder.

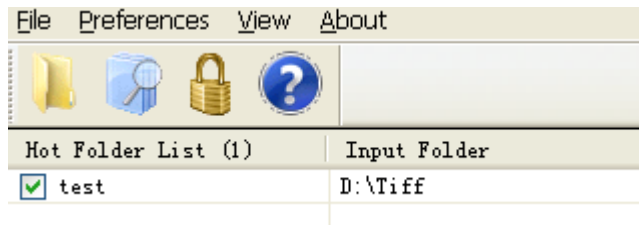




Figure-18

Note: When a hot folder is not running, i.e. unchecked, you can use the right-click menu items **Modify** and **Delete** to modify its setting or delete it.

4. By clicking, make sure that the button in the upper-right queue (i.e. the **Waiting...** queue), has turned from  to .

Now you can put tiff files under the hot folder, and the tiff files will soon enter into the file queue of the tool.

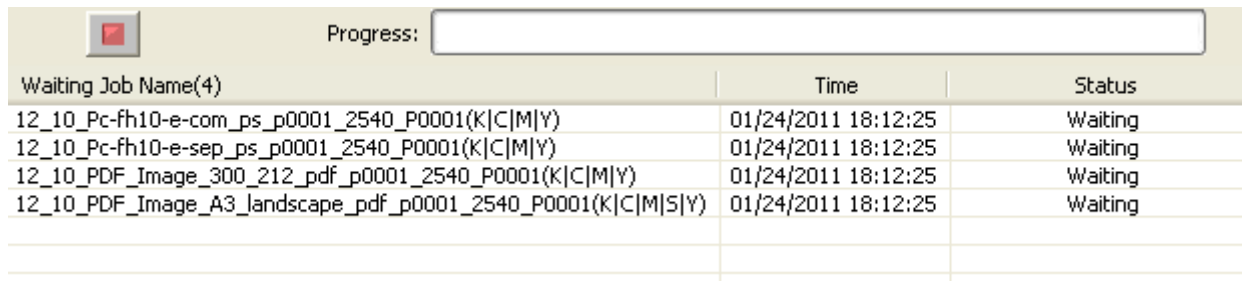


Figure-19

Output PDF file

Before the output

The submitted jobs are listed in the **Waiting...** queue. The separations it contains are indicated at the end of the job name, such as (K|C|M|Y|S). "S" indicates spot color.

1 Bit TIFF to PDF

Right-click a waiting job and you can get a shortcut menu. The menu items and their functions are as follows.

About Job: To view the detailed information about the job, including job name, submit type, time, tiff files it contains, color names, and job status.

Setting: To define the output setting.

Retry: To output once again in case that the output is failed. For instance, if your job contains a spot color tiff file but you haven't defined the spot color in advance, it would turn back the job (showing the job as **No Setting**) at the time of being output. In such case, you can define the spot color, and then choose this menu item to re-output the job.

Delete Selected Item: To delete the selected job in the queue.

Clear All Items: To delete all the jobs in the queue.

Output setting

Right-click the job and choose **Setting**.

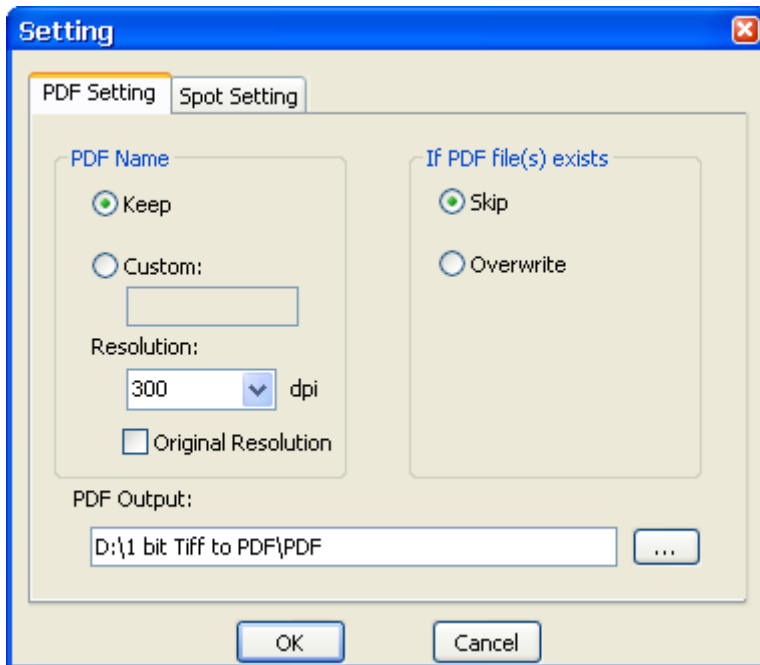


Figure-20

Under the **PDF Setting** tab:

PDF Name: If you choose **Keep**, the name of the generated PDF file keeps the same as that of the input tiff files. You can also choose **Custom** to define a custom file name.

Resolution: Here you can separately define the resolution. Otherwise, it remains the [resolution setting](#) as defined in the hot folder or that defined by choosing from the menu **Preferences > System Preferences > PDF Setting**.

PDF Output: Here you can also separately define the output folder.

If PDF file(s) exists: In case that a PDF file with same name exists in the output folder, if you choose **Skip**, a prefix will be added to the name of the newly-generated PDF file; and if you choose **Overwrite**, the existing file will be overwritten by the newer one.

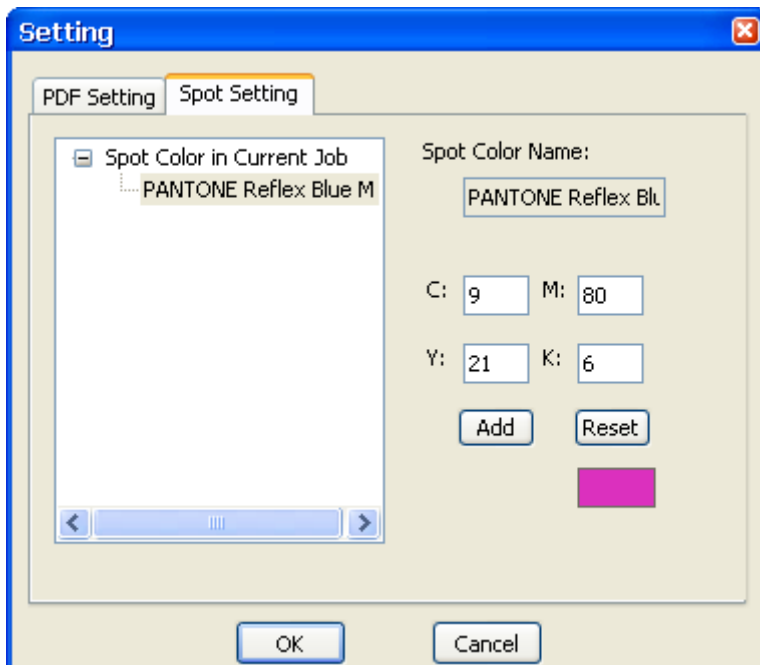




Figure-21

Under the **Spot Setting** tab:

If the job contains spot color separation, you need to define the values of the spot color, so that the tool can correctly output the spot color.

Choose a spot color (if any), and manually enter the cmyk values, and then click **Add**. You can also define the spot colors by choosing **Preferences > System Preferences > Spot Setting**.

Output

Click the button  in the lower-right queue, i.e. the **Processed...** queue, turning it to . And the tool then starts generating the PDF files.

1 Bit TIFF to PDF

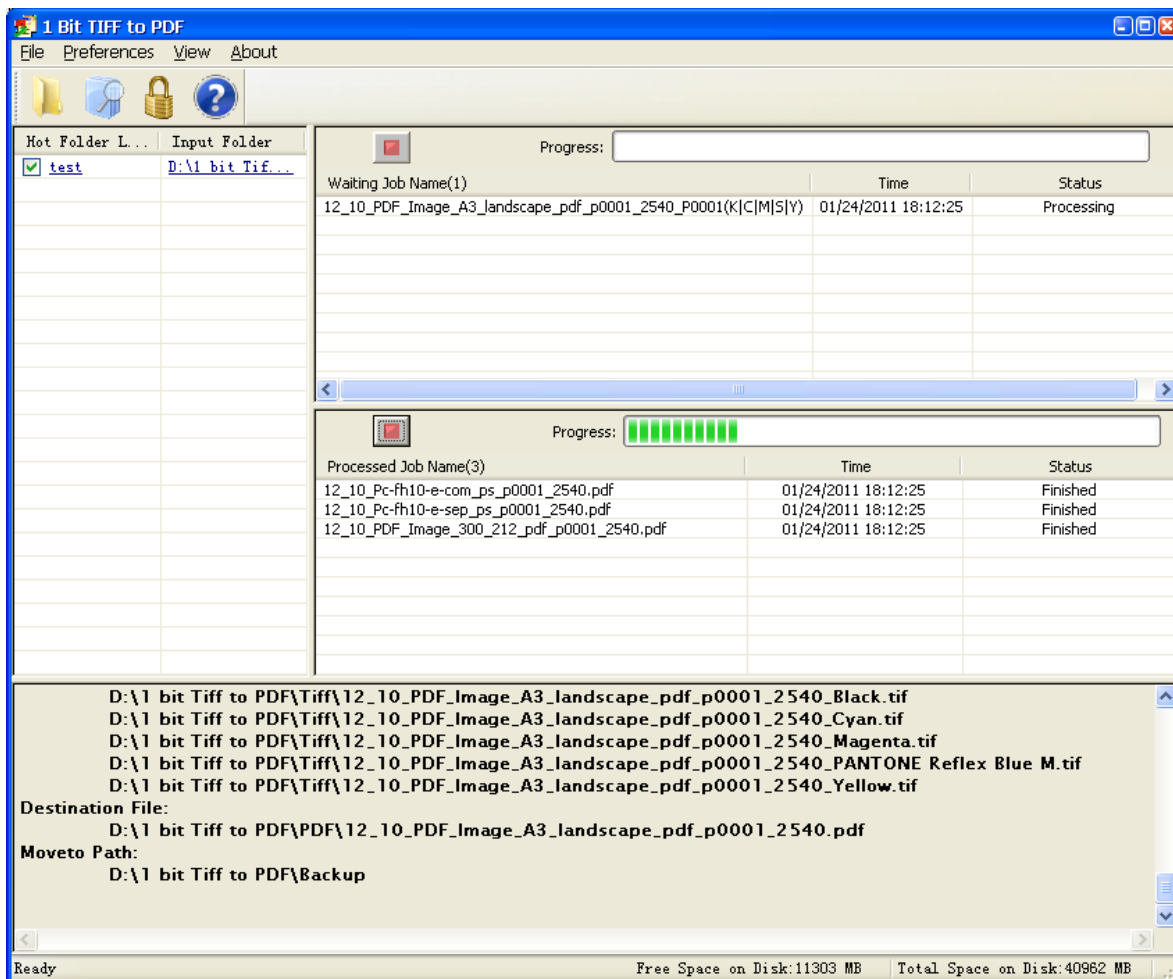


Figure-22

After the output

Switch to the output folder, and now you can see and open the generated PDF files.

In Adobe Reader or Acrobat, when you have opened the generated PDF file, choose from the main menu **Advanced > Print Production > Output Preview** to show all the separations of the file. If you don't check **Output Preview**, by default, it shows only one of the separations.

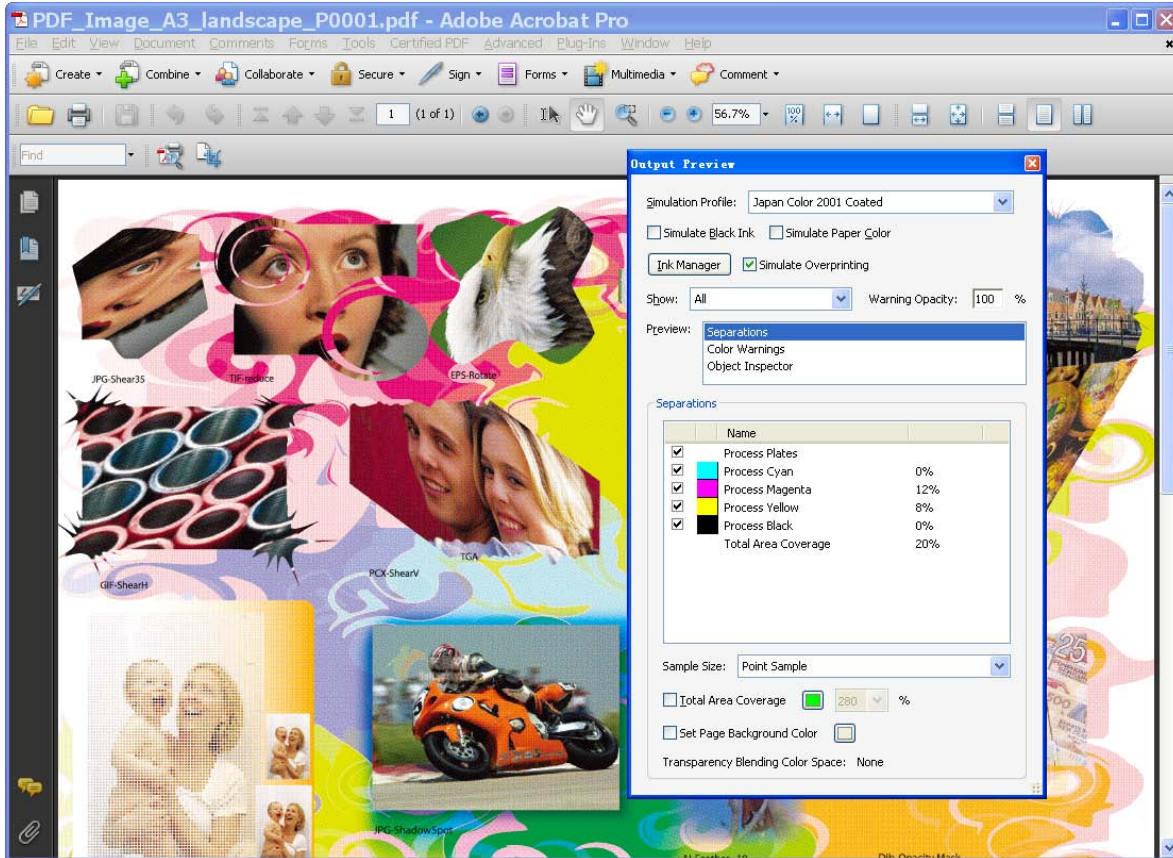



Figure-23

In the **Processed...** queue, you can use right-click menu items **Delete Selected Item** or **Clear All Items** to delete the finished jobs from the queue.

System Preferences

Click the toolbar icon , or choose from the menu **Preferences > System Preferences**.

1) Under the **System Setting** tab:

Maximum Jobs for Processing: The maximum number of jobs in the two job queues.

Warning Free Space: To issue warning when the free disk space in the partition where the tool is installed is less than the value specified here.

Information Window Buffer: The size of the buffer that stores the messages in the information window.

1 Bit TIFF to PDF

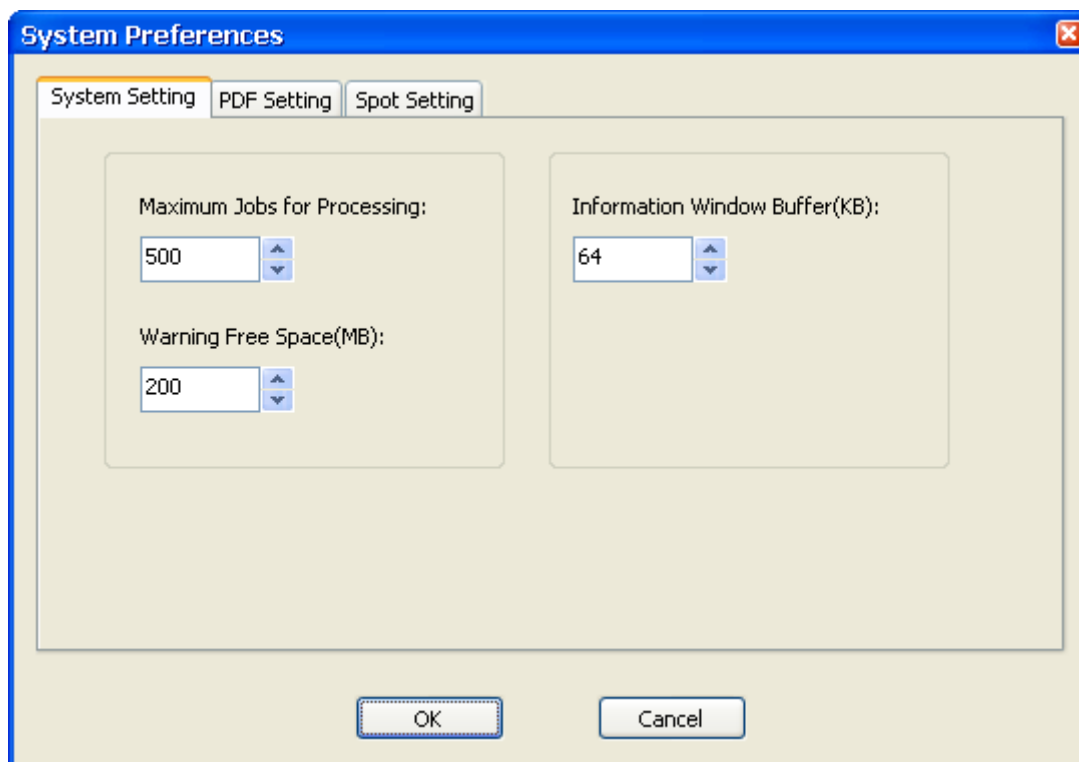


Figure-24

2) Under the **Spot Setting** tab:

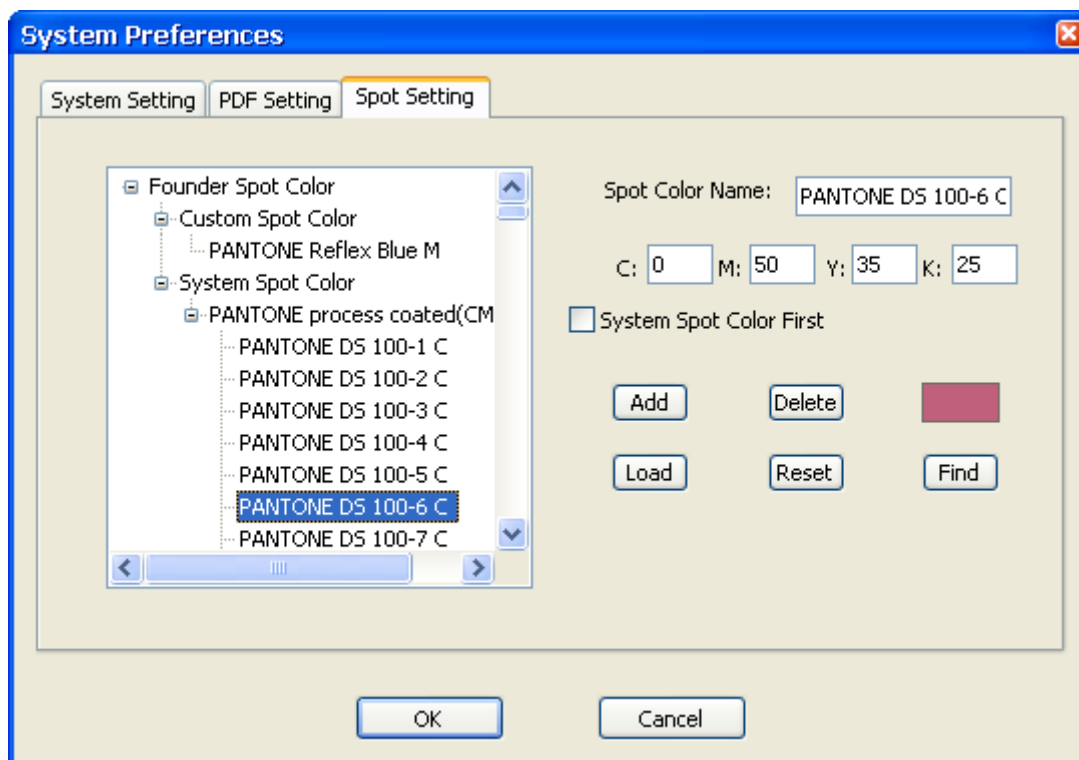


Figure-25

Here you can define the spot colors for all the jobs, so that they can be properly output.

Moreover, here you can import spot colors such as Pantone ones as system spot colors. But before this, you need to manually copy the spot color file (e.g. .sts file) into the **System Spots** directory (e.g. c:\Program Files\Founder\1 Bit TIFF to PDF\System Spots). To import system spot colors, choose **System Spot Color**, and click **Load**, and then choose the system spot color in the follow-up dialog box.

System Spot Color First: When checked, if two colors from the **Custom Spot Color** and the **System Spot Color** lists have a same name, the system one will be used first, otherwise the custom one first.

3) For settings under the **PDF Setting** tab, refer to the previous section.

Notes

For tiff files from ElecRoc, the file name may contains characters such as *, this is not supported by this tool. You need to manually delete such characters.

For EagleRIP tiff files screened in RGB mode, it's not recommended to use this tool to output PDF file.